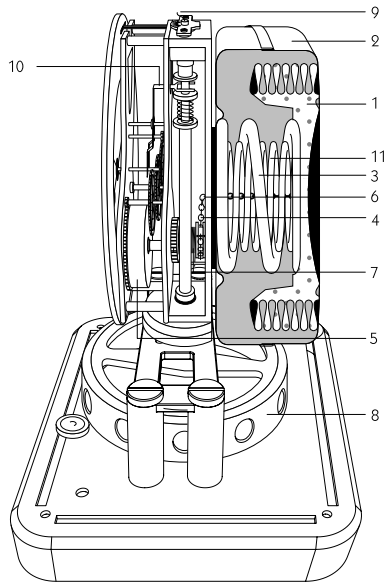


ATMOS MARQUETERIE



- | | |
|-----------------------------------|--------------------|
| 1. Expansion chamber | 7. Return spring |
| 2. Brass cover | 8. Balance |
| 3. Balance spring (counterweight) | 9. Elinvar® wire* |
| 4. Small chain | 10. Escapement |
| 5. Mainspring | 11. Winding spring |
| 6. Pulley | |

*The Elinvar brand does not belong to Jaeger-LeCoultre.

Introduction

Congratulations on purchasing your Atmos Marqueterie clock, and thank you for choosing Jaeger-LeCoultre.

With no battery, electric current or winding, the Atmos clock has been running on air since 1928.

Inspired by the regulators of the past, your Atmos Marqueterie clock displays the hours and minutes on two separate dials. Housed in either a traditional or futuristic cabinet, the Atmos clock allows a glimpse into eternity.

Please take a moment to consult the operating instructions. We hope that your Jaeger-LeCoultre clock brings you a lifetime of pleasure.

A virtually perpetual movement

Leonardo de Vinci had already demonstrated that perpetual motion could not be achieved, owing to the laws of physics. But it would take more than that to discourage the most dogged researchers. These researchers included the Neuchâtel engineer Jean-Léon Reutter who, in 1928, designed a completely revolutionary clock drawing its power from variations in the ambient temperature. It took a few more years of research by our Manufacture to transpose this idea into technical reality and patent it. The result would be hard to distinguish from perpetual motion: the Atmos clock was born.

Its principle is amazingly simple. An hermetically closed capsule houses a gaseous mixture which expands when the temperature rises and contracts when it falls. Integrated in the mainspring, the capsule swells and contracts like a concertina, permanently winding the clock's movement. Between 15 and 30 degrees Celsius, a temperature fluctuation of a single degree is sufficient to provide the clock with a power reserve of around two days.

The Atmos clock is designed so that no excessive resistance opposes this minimum power. The Atmos' balance wheel oscillates slowly, its diaphragm moves in perfect harmony with temperature variations and its heart calmly beats twice every minute, in other words, 60 times more slowly than that of a traditional clock, 240 times more slowly than the movement of a wristwatch and 1,966,000 times more slowly than that of a quartz watch. To get an idea of just how delicate this infinitesimal transfer of energy actually is, consider that 60 million Atmos clocks together would consume no more energy than a humble 15 watt bulb.

All of the Atmos clock's components boast an impressive level of precision and reliability; it also operates practically without wear. It is therefore distinguished by its long service life which - theoretically - can be as long as 600 years. However, owing to the pollution existing in the ambient air, regular checks and servicing are required.

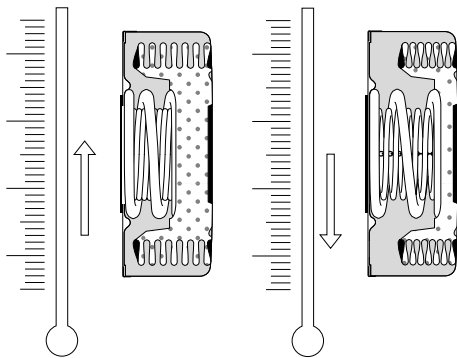
The Atmos clock is the perfect clock both for lovers of technical precision and those for whom sober lines and accomplished craftsmanship are paramount. In this respect, nothing has changed. Moreover, no Atmos clock ever escapes the five weeks of checks and fine adjustments undertaken in order to complete the work of Jaeger-LeCoultre's master clock-makers.

A unique gem of horological technology, the distinguished Atmos clock marks the time for Heads of State and numerous sovereigns, because in this country, which is world renowned for the perfection of its watches, it is a tradition to present guests of honour with this Swiss masterpiece of timekeeping. This has been so for decades now, and the eminent recipients include J.F. Kennedy, Winston Churchill, General de Gaulle and Charlie Chaplin.

Unique in the world. Atmos, the clock that runs on air

Temperature variations are its source of power. Its balance wheel will oscillate until the sun burns out.

Rises in temperatures expand the gaseous mixture enclosed in the expansion chamber; which compresses the winding spring. In the event of a drop in temperature, the reverse occurs. The gas contracts and the spring relaxes. This imperceptible to-and-fro movement is enough to wind the Atmos clock.



No battery, no electrical power, no winding.
Precise and silent.

A lunar calendar spanning around 4,000 years

Attuned to the rhythm of the rotational movements of the earth, the moon and the cosmos, no other timekeeping instrument is capable of more accurately tracing the moon's cycle across the skies. This function appears on certain Atmos clocks.

A conventional quartz clock with moon-phase indicator stays thoroughly accurate for two or three years. The most perfect mechanical watches, a field in which Jaeger-LeCoultre excels, show a one-day difference every 122 years; the Atmos clock is designed to display moon phases with exceptional precision for more than 4,000 years.

On the Atmos clock, the moon phases are indicated according to the real phases of the lunar month, called the synodic period, corresponding to the time elapsing between two full moons.

For the moon seen from the earth to have the same position relative to the sun, it will have to travel a further distance on its orbit. The result is that the lunar cycle lasts a little longer than the sidereal period, which is on average 29 days, 12 hours, 44 minutes and 2.8 seconds (or 29.530588 days). Furthermore, the going trains in your Atmos clock are so precise that they complete their entire journey in 29.530568 days, hence a minute difference per lunar cycle that translates to one day every 3,821 years.

Precautions for operation and transport

The Atmos Marqueterie clock is an ultra-high precision instrument produced using technology of which only Jaeger-LeCoultre's master clockmakers have expert knowledge. The power needed for this clock to operate is extremely low, which means that your Atmos clock must be placed on a horizontal support that is completely stable (chest of drawers, console, etc.) to ensure optimum operating conditions. Once it has been started, the clock must not be moved: the cabinet or support must be cleaned without handling or moving the clock.

If, however, your clock needs to be moved, it is essential to lock the balance wheel. To do this, press the pushpiece located at the bottom of the marquetry cabinet's front face to open the two doors. This is the intermediate position. Press the pushpiece again to open the doors fully to the service position. Then open the glass cabinet (see section entitled 'Opening the cabinet') and push the balance wheel's locking lever fully to the right.

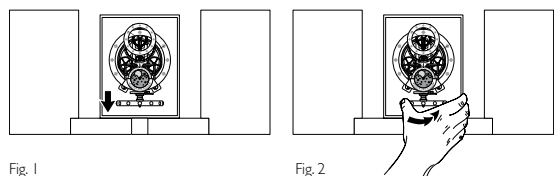


Fig. 1

Fig. 2

This locking procedure must be carried out when the balance wheel stops before oscillating back in the opposite direction.

Once the procedure is complete, close the glass door then gently push the two doors of the marquetry cabinet back until they close.

When transporting your clock, or when having it shipped or sent by mail, we recommend that you use only the full, complete original packaging. If you no longer have certain parts of this packaging, you can replace them by contacting your approved Jaeger-LeCoultre stockist.

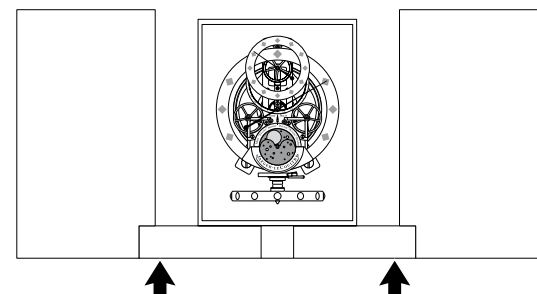


Fig. 3

Using the Atmos Marqueterie clock

To start the Atmos Marqueterie clock, please proceed as follows:

Locking and unlocking the balance wheel

The balance wheel on the Atmos Marqueterie clock is suspended on an extremely fine wire. For this reason, it must always be locked before the clock is transported, even when moving from room to room, and when adjustments are being made. This locking system comprises a locking lever, and must only be released once the time has been set (see section entitled “Setting the time”).

Before moving this locking lever, refer to the section entitled “Precautions for operation and transport”.

Ensuring the clock is level

To ensure that your Atmos Marqueterie clock operates correctly, its base must be perfectly horizontal. The clock has a spirit level at the rear of the cabinet to allow you to stabilise it properly.

To ensure correct operation, the bubble must be perfectly centred in the level. The Atmos Marqueterie clock rests on 4 adjustable feet (Fig. 4). When you have placed your clock in its final location, you can perform level setting easily by screwing up or unscrewing each of the feet.

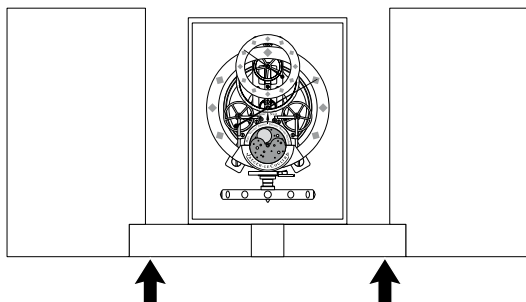


Fig. 4

Opening the cabinet

The Atmos Marqueterie clock has a glass door at the front that can be released by pressing the button on the door downwards, then pulling it gently towards you. You can remove it by raising it.

Avoid tilting the door too much while it is still in the groove on the base, so as not to damage the bottom of the glass.

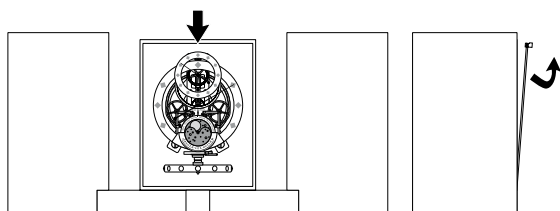


Fig. 5

Setting the time

To set the time on your Atmos clock, use your finger to move the minute hand in a clockwise direction (Fig. 6).

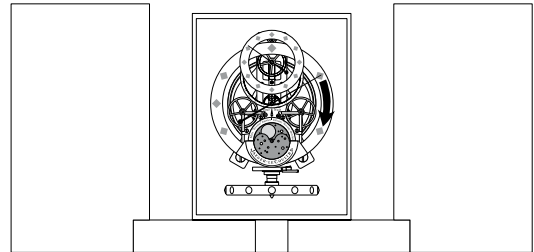


Fig. 6

Note:

- Never touch the hour hand.
- Never turn the minute hand anti-clockwise.
- Never set the time before checking that the balance wheel is locked.

Setting the month and moon phase

Below you will find additional instructions relating to the moon phase functions, which are set using the tool supplied with the clock. Before starting your Atmos Marqueterie clock, you must set the month indicator, then the moon-phase indicator. First set the position of the month disc. To do this, insert the tool supplied with the clock in designated location (a), at the centre of the moon phase aperture. Turn the tool anti-clockwise to find the desired month, bearing in mind that the month appears centred in front of its 24 hr/month hand at the 15th of the month. The position of the month disc is therefore set approximately depending on whether setting is performed at the start, middle or end of the month. You will need to wait until the start of the next month to obtain a precise setting.

To set the position of the moon phase disc, take a lunar calendar (a lunar calendar up to 2013 is available in your User's Manual) and choose a day on which there is a full moon to complete the setting. Insert the setting tool into the centre of the moon phase disc (b) and turn it clockwise until the moon is perfectly centred.

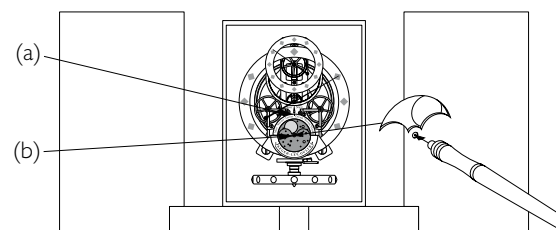


Fig. 7

Starting the clock

Unlock the balance wheel using the locking lever located on the front of the clock under the dial. Press the lever gently to lower it, and at the same time move it to the left. Be sure not to touch the balance wheel during this manoeuvre. Once released, the balance wheel will start to oscillate slowly.

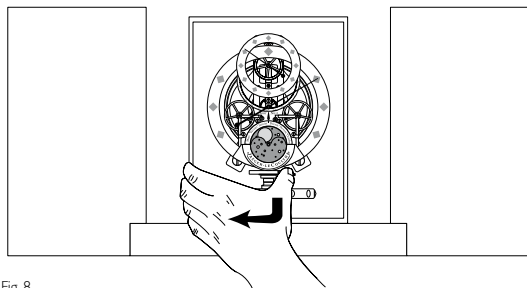


Fig. 8

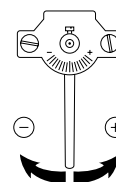
If the balance wheel does not move:

- check that the clock is level.
- if the bubble is perfectly centred on the spirit level, gently turn the balance wheel half a turn by hand, then allow it to start moving by itself. Close the door once the balance wheel is oscillating normally.

Important: Never move your Atmos clock before locking the balance wheel (see section entitled "Locking and unlocking the balance wheel").

Adjusting the gain and loss

Your Atmos clock has been set at the Jaeger-LeCoultre Manufacture, situated at an altitude of 1,000 metres in the heart of the Swiss Jura. If, after about a month of operation (the time required to ensure that the balance wheel is perfectly stabilised), you notice that your clock is slightly gaining or losing time, you can remedy this using the adjustment lever located at the top of the movement.



The table below shows you by how many graduations the adjustment lever must be moved depending on the number of minutes' time loss or gain on your clock. Following the indications on the table, to correct a gain, move the lever to the left, towards the "-" sign; to correct a loss, move the lever to the right, towards the "+" sign.

Gain or loss observed after 1 month		
	Minutes per month	Correction by moving the regulator lever
Gain	+ 2.5 min	1/2
	+ 5 min	1
	+ 7.5 min	1.5
	+ 10 min	2
	+ 15 min	3
	+ 20 min	4
Loss	- 2.5 min	1/2
	- 5 min	1
	- 7.5 min	1.5
	- 10 min	2
	- 15 min	3
	- 20 min	4

graduation(s) to the left

graduation(s) to the right

Avoid touching your Atmos clock once you have started it. It will operate without the need for adjustment, as the Atmos clock runs on air alone.

International Guarantee

This International Guarantee applies to Jaeger-LeCoultre products sold or presented for guarantee repairs in all countries except the United States of America and Canada (for those two countries, see the Limited Warranty).

The manufacturer's International Guarantee applies only to Jaeger-LeCoultre products purchased from authorised Jaeger-LeCoultre retailers. In addition, all maintenance and repair works must be carried out either by an authorised Jaeger-LeCoultre retailer or by an official Jaeger-LeCoultre Service Centre. If these conditions are not met, the manufacturer's guarantee does not apply. For a list of authorised Jaeger-LeCoultre retailers worldwide, please contact Jaeger-LeCoultre or its Distributors.

The Jaeger-LeCoultre Atmos clocks

The terms and conditions of the Jaeger-LeCoultre International Guarantee

The following terms and conditions of the Jaeger-LeCoultre International Guarantee apply to Atmos clocks sold or presented for guarantee repairs in all countries except the United States of America and Canada (for those two countries, see the Limited Warranty).

Your Jaeger-LeCoultre Atmos clock is guaranteed against all manufacturing defects for three years from the date of purchase, subject to the following conditions.

Any part found by our technical services to be defective as a result of a manufacturing defect will be, at the sole discretion of Jaeger-LeCoultre, repaired or replaced free of charge.

The Jaeger-LeCoultre International Guarantee is valid only if the guarantee certificate enclosed with this booklet has been duly completed, dated, stamped and signed by the authorised Jaeger-LeCoultre retailer who sold your Atmos clock.

This international guarantee does not cover defects resulting from accidents, mishandling, incorrect or abusive use (for example, knocks, dents, crushing, excessive temperatures, powerful magnetic fields), unauthorised alteration or repair or the consequences of normal wear and ageing.

The Atmos clock operates without batteries, electricity or winding. It is accurate and silent but very sensitive, as it requires only an extremely low amount of energy to operate.

To ensure that your Atmos clock functions properly, you must place it on an absolutely stable horizontal surface (chest of drawers, console table, mantelpiece, etc). We advise you to keep your Atmos clock away from any magnetic fields (computer, television, etc), as these may interfere with its functioning.

The Atmos clock must not be moved once it has been started. Should you have to transport your Atmos clock, do not forget to lock the balance beforehand (this operation must be carried out just as the balance stops and before it starts moving again in the opposite direction).

In order to use your Atmos clock correctly, please refer carefully to the attached instructions, in particular before starting the clock or transporting it.

As a consumer, you may have legal rights under applicable national legislation governing the sale of consumer goods; those rights are not affected by this guarantee.

Customer service at Jaeger-LeCoultre

The characteristic feature of the Atmos clock is its long operating life. It functions with virtually no wear and requires no particular maintenance or lubrication. It may, however, need cleaning, because of air pollution. Should your Atmos clock need servicing or repairs, please send it, together with its guarantee certificate, to the authorised Jaeger-LeCoultre retailer who sold it to you.

Alternatively, you may send it to one of the official Jaeger-LeCoultre Service Centres listed at the end of this booklet, or to any authorised Jaeger-LeCoultre retailer of which a list is available on the «www.jaeger-lecoultre.com» website.

Our official Service Centres employ watchmakers trained at the Jaeger-LeCoultre Manufacture and possess the tools and parts necessary to repair and maintain all Jaeger-LeCoultre watches and clocks.

In certain cases, especially for operations requiring special tools and parts, the Service Centre will send your Atmos clock to the Jaeger-LeCoultre Manufacture in Switzerland to have the necessary work carried out.

In any case or if you live in a country which is not indicated in our lists, please do not hesitate to contact directly Manufacture Jaeger-LeCoultre, Switzerland, Rue de la Golisse 8, 1347 Le Sentier; telephone +41 21 845 02 02, fax +41 21 845 05 50, which will inform you of the procedure to follow. We also invite you to visit our website «www.jaeger-lecoultre.com» for an updated list of official Jaeger-LeCoultre Service Centres.

We will need to keep your Atmos clock for between 6 and 8 weeks, for servicing or repair. This includes the same 5 week testing and inspection procedure that new Atmos clocks undergo before they are offered for sale.

Limited Warranty

The following Limited Warranty applies to Jaeger-LeCoultre products sold or presented for warranty repairs in the United States of America and Canada only.

The manufacturer's Limited Warranty applies only to Jaeger-LeCoultre products purchased from authorised Jaeger-LeCoultre retailers. In addition, all maintenance and repair works must be carried out either by an authorised Jaeger-LeCoultre retailer or by an official Jaeger-LeCoultre Service Centre. If these conditions are not met, the manufacturer's Limited Warranty does not apply. For a list of authorised Jaeger-LeCoultre retailers worldwide, please contact Jaeger-LeCoultre or its Distributors.

The Jaeger-LeCoultre Atmos clocks

The terms and conditions of the Jaeger-LeCoultre Limited Warranty

The following terms and conditions of Jaeger-LeCoultre Limited Warranty apply only to Atmos clocks sold or presented for warranty repairs in the United State of America and Canada.

Your Jaeger-LeCoultre Atmos clock is guaranteed against all manufacturing defects for three years from the date of purchase, subject to the following conditions.

Any part found by our technical services to be defective as a result of a manufacturing defect will be, at the sole discretion of Jaeger-LeCoultre, repaired or replaced free of charge.

The Jaeger-LeCoultre Limited Warranty is valid only if the warranty certificate enclosed with this booklet has been duly completed, dated, stamped and signed by the authorised Jaeger-LeCoultre retailer who sold your Atmos clock.

This Limited Warranty does not cover defects resulting from accidents, mishandling, incorrect or abusive use (for example, knocks, dents, crushing, excessive temperatures, powerful magnetic fields), unauthorised alteration or repair or the consequences of normal wear and ageing.

The Atmos clock operates without batteries, electricity or winding. It is accurate and silent but very sensitive, as it requires only an extremely low amount of energy to operate.

To ensure that your Atmos clock functions properly, you must place it on an absolutely stable horizontal surface (chest of drawers, console table, mantelpiece, etc). We advise you to keep your Atmos clock away from any magnetic fields (computer, television, etc), as these may interfere with its functioning.

The Atmos clock must not be moved once it has been started. Should you have to transport your Atmos clock, do not forget to lock the balance beforehand (this operation must be carried out just when the balance stops and before it starts moving in the opposite direction).

In order to use your Atmos clock correctly, please refer carefully to the attached instructions, in particular before starting the clock or transporting it.

Except insofar as prohibited by applicable law, this limited warranty shall be the exclusive manufacturer warranty. Neither this limited warranty nor any other warranties, whether express or implied, including, but not limited to, any implied warranty of merchantability or of fitness for any particular purpose, shall extend beyond the period of three years from the date of purchase.

The liability of Jaeger-LeCoultre is limited solely and exclusively to repair or replacement under the terms and conditions stated herein. Jaeger-LeCoultre shall not be liable, by virtue of this limited warranty or otherwise, for any loss or damage arising out of the use of or inability to use this Atmos clock nor for any incidental or consequential damages relating in any way to this clock. Some States, Provinces and Territories do not allow limitations on how long an implied warranty lasts, or the exclusion or limitation of incidental or consequential damages so the above limitations or exclusions may not apply to you.

This limited warranty grants you specific legal rights, in addition to which you may have other legal rights which vary from one Country, State, Province or Territory to another.

Customer service at Jaeger-LeCoultre

The characteristic feature of the Atmos clock is its long operating life. It functions with virtually no wear and requires no particular maintenance or lubrication. It may, however, need cleaning, because of air pollution. Should your Atmos clock need servicing or repairs, please send it, together with its warranty certificate, to the authorised Jaeger-LeCoultre retailer who sold it to you.

Alternatively, you may send it to one of the official Jaeger-LeCoultre Service Centres listed at the end of this booklet, or to any authorised Jaeger-LeCoultre retailer of which a list is available on the «www.jaeger-lecoultre.com» website.

Our official Service Centres employ watchmakers trained at the Jaeger-LeCoultre Manufacture and possess the tools and parts necessary to repair and maintain all Jaeger-LeCoultre watches and clocks.

In certain cases, especially for operations requiring special tools and parts, the Service Centres will send your Atmos to the Jaeger-LeCoultre Manufacture in Switzerland to have the necessary work carried out.

In any case or if you live in a country which is not indicated in our lists, please do not hesitate to contact directly Manufacture Jaeger-LeCoultre, Switzerland, Rue de la Golisse 8, 1347 Le Sentier; telephone +41 21 845 02 02, fax +41 21 845 05 50, which will inform you of the procedure to follow. We also invite you to visit our website «www.jaeger-lecoultre.com» for an updated list of official Jaeger-LeCoultre Service Centres.

We will need to keep your Atmos clock for between 6 and 8 weeks, for servicing or repair. This includes the same 5 week testing and inspection procedure that new Atmos clocks undergo before they are offered for sale.